

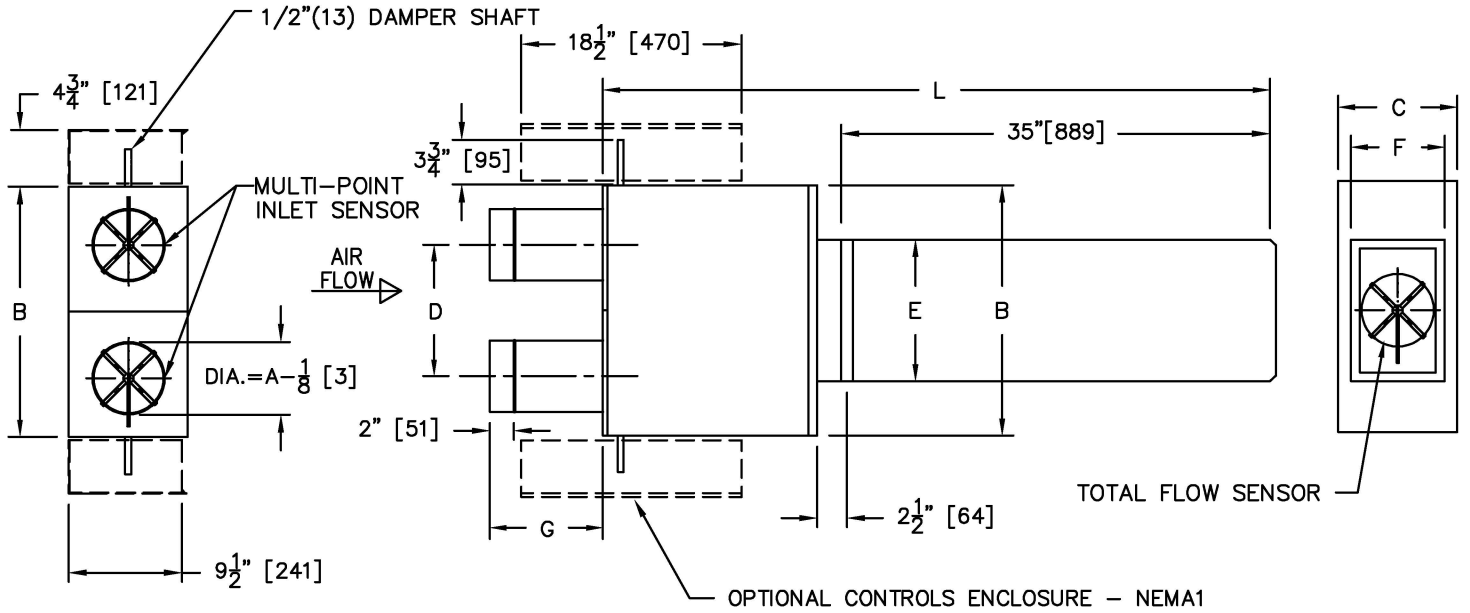
UNIT SIZE	MAX CFM	MAX L/S	IMPERIAL UNITS (inches)								SI UNITS (mm)						
			INLET A	B	C	OUTLET		L	G	INLET A	B	C	OUTLET		L	G	
						D	E						F	D			E
4	225	106	4							11½	102					292	
5	350	165	5							11½	127					292	
6	400	189	6	21	10	11	11¾	7¾	55½	9½	152	533	254	279	302	200	1410
7	550	259	7														
8	750	354	8							9½	203					241	
9	1000	472	9							9½	229					241	
10	1300	613	10	25	12½	13	13¾	12¾	57½	9½	251	635	318	330	352	314	1461
12	1900	896	12	29	15	15	15¾	14¾	65½	9½	305	737	381	381	403	378	1664
14	2900	1368	14	40	17½	20¾	19¾	17¾	77¾	4¾	356	1016	445	511	505	441	1978
16	3500	1651	16	48	18	24¾	23¾	17¾	85¾	4¾	406	1219	457	613	606	454	2150

- NOTES:**
- INTERNAL INSULATION - FIBERGLASS 3/4"(19mm)THICK, MIN. 1.5# DENSITY WHICH MEETS REQUIREMENTS OF NFPA 90A AND UL181
 - 22 GA. ZINC COATED STEEL HOUSING. MECHANICALLY SEALED AND GASKETED, LEAK RESISTANT CONSTRUCTION
 - MAXIMUM L/S (CFM) SETTINGS ARE FOR EITHER HOT OR COLD INLETS
 - GAUGE TAPS ARE STANDARD
 - PNEUMATIC ACTUATOR SUPPLIED & MOUNTED BY PRICE
 - CLEAN, DRY, 20 PSI (138 KPa) CONTROL AIR REQUIRED
 - TOTAL FLOW SENSOR TUBES EXIT ON HOT DECK SIDE
 - INTERNAL MIXING BAFFLE

- OPTIONS:**
- PNEUMATIC ACTUATOR SUPPLIED BY CONTROL CONTRACTOR & MOUNTED BY PRICE
 - CONTROLLER COVER
- LINERS AND CONSTRUCTION OPTIONS:**
- 1"(25mm) FIBERGLASS
- FF CRWF
 - FF50 FB
 - CRAF PM
 - SM AFPM

ALL METRIC DIMENSIONS () ARE SOFT CONVERTED. IMPERIAL DIMENSIONS ARE CONVERTED TO METRIC AND ROUNDED TO THE NEAREST MILLIMETER.

PROJECT:		PRICE®	
ENGINEER:		GH	DPQ8000 DUAL DUCT QUIET CONSTANT & VARIABLE PNEUMATIC CONTROLS PRESSURE INDEPENDENT
CUSTOMER:		227816	
SUBMITTAL DATE:	SPEC. SYMBOL:	2024/06/03	



UNIT SIZE	MAX CFM	MAX L/S	IMPERIAL UNITS (inches)							SI UNITS (mm)								
			INLET	B	C	D	OUTLET		L	G	INLET	B	C	D	OUTLET		L	G
			A				E	F			A				E	F		
4	225	106	4							11½	102							292
5	350	165	5							11½	127							292
6	400	189	6	21	10	11	11¾	7¾	55½	9½	152	533	254	279	302	200	1410	241
7	550	259	7															241
8	750	354	8							9½	178							241
9	1000	472	9							9½	203							241
10	1300	613	10	25	12½	13	13¾	12¾	57½	9½	229	635	318	330	352	314	1461	241
12	1900	896	12															241
14	2900	1368	14	40	17½	20¾	19¾	17¾	77¾	4¾	356	1016	445	511	505	441	1978	111
16	3500	1651	16	48	18	24¾	23¾	17¾	84¾	4¾	406	1219	457	613	606	454	2150	111

NOTES:

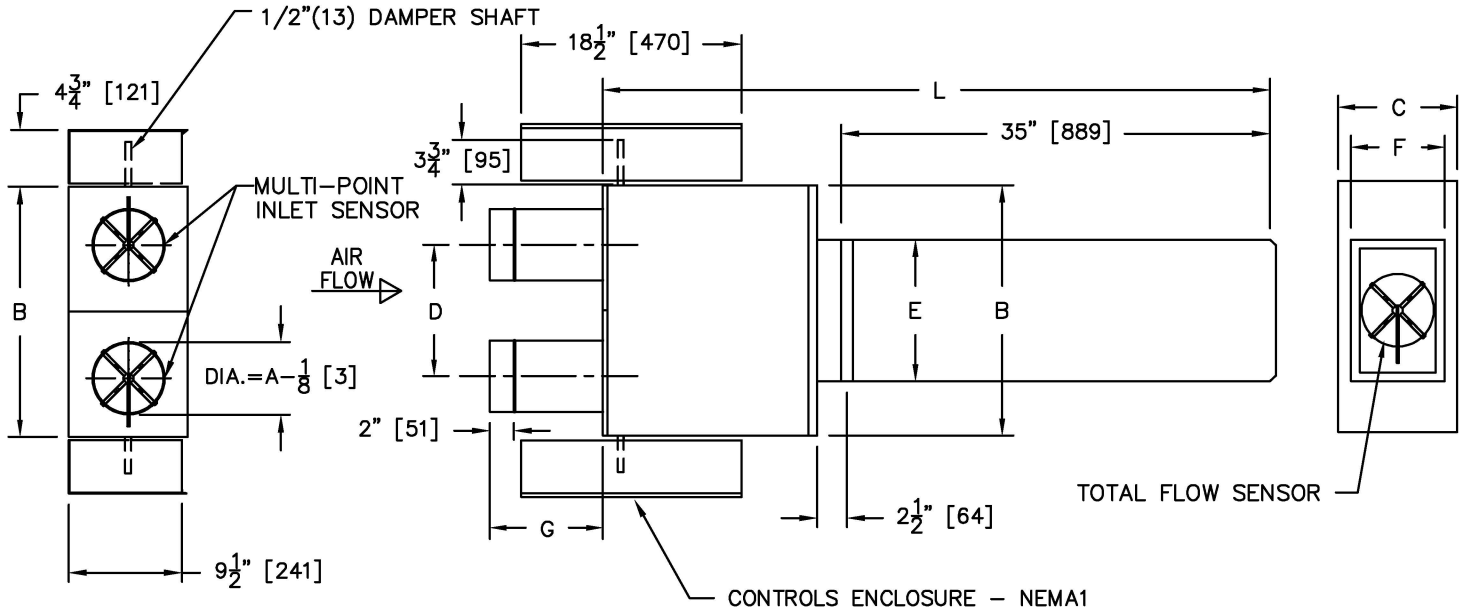
- INTERNAL INSULATION - FIBERGLASS 3/4"(19mm)THICK, MIN. 1.5# DENSITY WHICH MEETS REQUIREMENTS OF NFPA 90A AND UL181
- 22 GA. ZINC COATED STEEL HOUSING. MECHANICALLY SEALED AND GASKETED, LEAK RESISTANT CONSTRUCTION
- MAXIMUM L/S (CFM) SETTINGS ARE FOR EITHER HOT OR COLD INLETS
- TOTAL FLOW SENSOR TUBES EXIT ON HOT DECK SIDE
- DIGITAL CONTROLS BY CONTROL CONTRACTOR
- INTERNAL MIXING BAFFLE

OPTIONS:

- CONTROLS ENCLOSURE
- DISCONNECT SWITCH
- GT - BRASS AIRFLOW SENSOR GAUGE TAPS
- LINERS AND CONSTRUCTION OPTIONS:
- 1"(25mm) FIBERGLASS
- FF FF50
- CRAF FB1
- SM PM
- AFPM

ALL METRIC DIMENSIONS () ARE SOFT CONVERTED. IMPERIAL DIMENSIONS ARE CONVERTED TO METRIC AND ROUNDED TO THE NEAREST MILLIMETER.

PROJECT:	PRICE®	
ENGINEER:	GH	DDQ5000 DUAL DUCT QUIET CONSTANT & VARIABLE DIGITAL CONTROLS PRESSURE INDEPENDENT
CUSTOMER:	227817	
SUBMITTAL DATE:	SPEC. SYMBOL:	2024/06/03



UNIT SIZE	MAX CFM	MAX L/S	IMPERIAL UNITS (inches)							SI UNITS (mm)								
			INLET A	B	C	D		OUTLET		L	G	INLET A	B	C	D		L	G
						E	F	E	F									
4	225	106	4							11½	102						292	
5	350	165	5							11½	127						292	
6	400	189	6	21	10	11	11¾	7¾	55½	9½	152	533	254	279	302	200	1410	241
7	550	259	7															
8	750	354	8							9½	203						241	
9	1000	472	9	25	12½	13	13¾	12¾	57½	9½	229	635	318	330	352	314	1461	241
10	1300	613	10															
12	1900	896	12	29	15	15	15¾	14¾	65½	9½	305	737	381	381	403	378	1664	241
14	2900	1368	14	40	17½	20¾	19¾	17¾	77¾	4¾	356	1016	445	511	505	441	1978	111
16	3500	1651	16	48	18	24¾	23¾	17¾	84¾	4¾	406	1219	457	613	606	454	2150	111

NOTES:

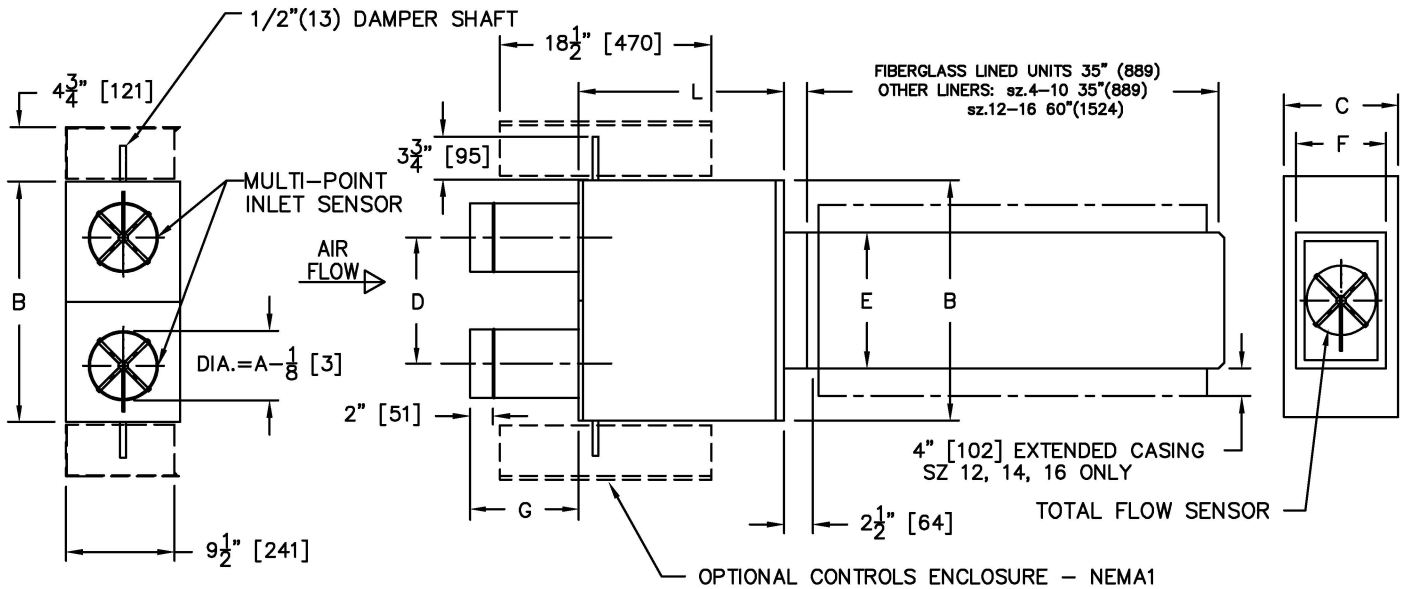
- INTERNAL INSULATION - FIBERGLASS 3/4"(19mm)THICK, MIN. 1.5# DENSITY WHICH MEETS REQUIREMENTS OF NFPA 90A AND UL181
- 22 GA. ZINC COATED STEEL HOUSING. MECHANICALLY SEALED AND GASKETED, LEAK RESISTANT CONSTRUCTION
- MAXIMUM L/S (CFM) SETTINGS ARE FOR EITHER HOT OR COLD INLETS
- FLOW SENSOR TUBES EXIT ON HOT DECK SIDE
- INTERNAL MIXING BAFFLE
- DDQ8000 INCLUDES:
 - DUAL MULTI-POINT SENSOR BY PRICE
 - PRICE CONTROLS FACTORY MOUNTED
 - PRICE THERMOSTAT FIELD MOUNTED

OPTIONS:

- DISCONNECT SWITCH
- LINERS AND CONSTRUCTION OPTIONS:**
- 1"(25mm) FIBERGLASS
- FF
- FF50
- FB1
- CRAF
- SM
- PM
- AFPM

ALL METRIC DIMENSIONS () ARE SOFT CONVERTED. IMPERIAL DIMENSIONS ARE CONVERTED TO METRIC AND ROUNDED TO THE NEAREST MILLIMETER.

PROJECT:		PRICE [®]	
ENGINEER:		G	DDQ8000 DUAL DUCT QUIET CONSTANT & VARIABLE PRICE CONTROLS PRESSURE INDEPENDENT
CUSTOMER:		253227	
SUBMITTAL DATE:	SPEC. SYMBOL:	2024/06/03	



UNIT SIZE	MAX CFM	MAX L/S	IMPERIAL UNITS (inches)								SI UNITS (mm)								
			INLET	B	C	D		OUTLET		L	G	INLET	B	C	D	OUTLET		L	G
			A			E	F			A			E	F					
4	225	106	4								11½	102						292	
5	350	165	5								11½	127						292	
6	400	189	6	21	10	11	11½	7½	18	9½	152	533	254	279	302	200	457	241	
7	550	259	7					9½		9½	178							241	
8	750	354	8					9½		9½	203				251			241	
9	1000	472	9					9½	20	9½	229						508	241	
10	1300	613	10	25	12½	13	13½	12¾		9½	251	635	318	330	352	314		241	
12	1900	896	12	29	15	15	15½	14¾	28	9½	305	737	381	381	403	378	711	241	
14	2900	1368	14	40	17½	20½	19¾	17¾	40¾	4¾	356	1016	445	511	505	441	1026	111	
16	3500	1651	16	48	18	24½	23¾	17¾	47¾	4¾	406	1219	457	613	606	454	1197	111	

NOTES:

- INTERNAL INSULATION - FIBERGLASS 3/4"(19mm)THICK, MIN. 1.5# DENSITY WHICH MEETS REQUIREMENTS OF NFPA 90A AND UL181
- 22 GA. ZINC COATED STEEL HOUSING. MECHANICALLY SEALED AND GASKETED, LEAK RESISTANT CONSTRUCTION
- MAXIMUM L/S (CFM) SETTINGS ARE FOR EITHER HOT OR COLD INLETS
- TOTAL FLOW SENSOR TUBES EXIT ON HOT DECK SIDE
- DIGITAL CONTROLS BY CONTROL CONTRACTOR
- SILENCER - MEDIUM PRESSURE STYLE, 22 GAUGE GALVANIZED CASING 26GA PERFORATED LINER OVER FIBERGLASS ACOUSTIC MEDIA
- PRODUCT TO BE SHIPPED ASSEMBLED WITH SILENCER FACTORY ATTACHED
- INTERNAL MIXING BAFFLE

OPTIONS:

- CONTROLS ENCLOSURE
- DISCONNECT SWITCH
- GT - BRASS AIRFLOW SENSOR GAUGE TAPS

TERMINAL LINERS AND CONSTRUCTION OPTIONS:

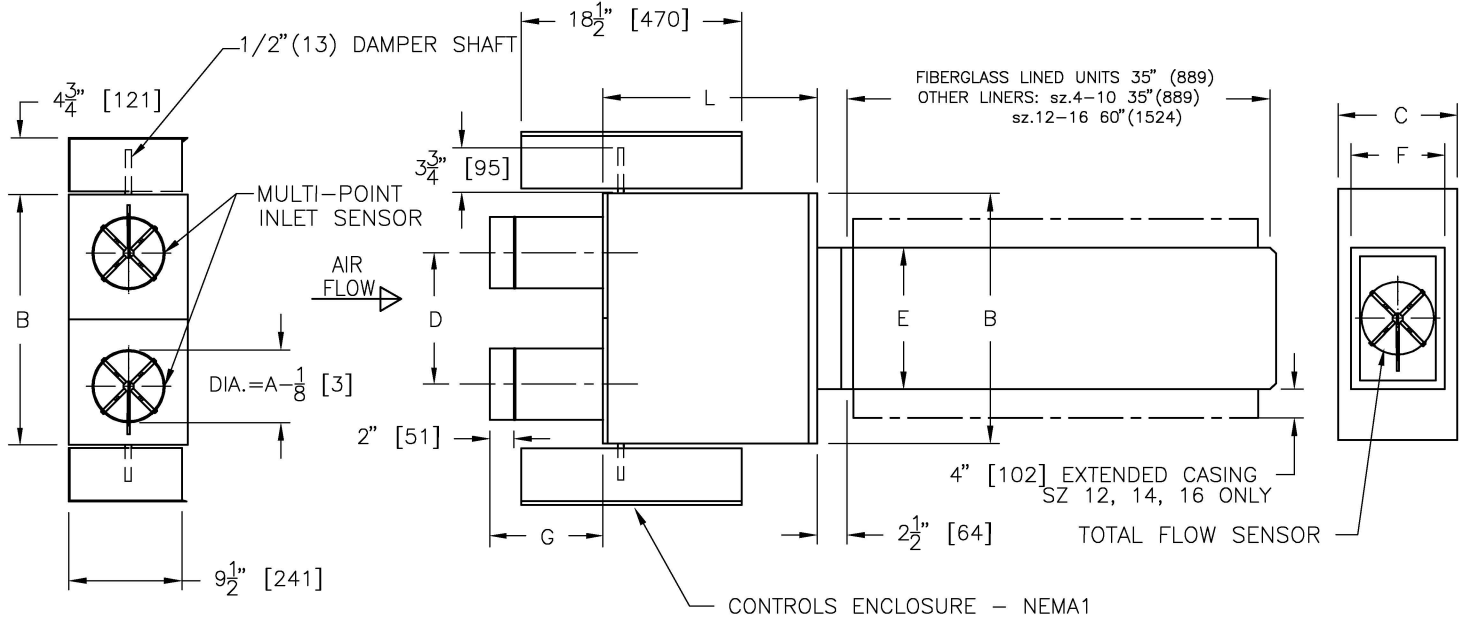
- 1"(25mm) FIBERGLASS
- FF FF50 SM
- CRAF AFPM PM
- FB1

SILENCER LINERS:

- PL - POLYMER LINER
- FC - FIBERGLASS CLOTH

ALL METRIC DIMENSIONS () ARE SOFT CONVERTED. IMPERIAL DIMENSIONS ARE CONVERTED TO METRIC AND ROUNDED TO THE NEAREST MILLIMETER.

PROJECT:		PRICE [®]	
ENGINEER:		GH	DDUQ5000
CUSTOMER:		254144	DUAL DUCT ULTRA QUIET CONSTANT & VARIABLE DIGITAL CONTROLS PRESSURE INDEPENDENT
SUBMITTAL DATE:	SPEC. SYMBOL:	2024/06/03	



UNIT SIZE	MAX CFM	MAX L/S	IMPERIAL UNITS (inches)							SI UNITS (mm)										
			INLET A	B	C	OUTLET		L	G	INLET A	B	C	OUTLET		L	G				
						E	F						E	F						
4	225	106	4						11?	102						292				
5	350	165	5						11?	127						292				
6	400	189	6	21	10	11	11 ⁷ / ₈	7 ⁷ / ₈	18	9?	152	533	254	279	302	200	457			
7	550	259	7							9?	178							251	241	
8	750	354	8					9?		203	241									
9	1000	472	9	25	12?	13	13 ³ / ₈	12 ³ / ₈	20	9?		229	635	318	330	352	314	508		241
10	1300	613	10							9?		251							711	
12	1900	896	12	29	15	15	15 ⁷ / ₈	14 ⁷ / ₈	28	9?	305	737	381	381	403	378	711	241		
14	2900	1368	14	40	17?	20 ³ / ₈	19 ⁷ / ₈	17 ³ / ₈	40 ³ / ₈	4 ³ / ₈	356	1016	445	511	505	441	1026	111		
16	3500	1651	16	48	18	24 ³ / ₈	23 ³ / ₈	17 ³ / ₈	47 ³ / ₈	4 ³ / ₈	406	1219	457	613	606	454	1197	111		

NOTES:

- INTERNAL INSULATION - FIBERGLASS 3/4" (19mm) THICK, MIN. 1.5# DENSITY WHICH MEETS REQUIREMENTS OF NFPA 90A AND UL181
- 22 GA. ZINC COATED STEEL HOUSING. MECHANICALLY SEALED AND GASKETED, LEAK RESISTANT CONSTRUCTION
- MAXIMUM L/S (CFM) SETTINGS ARE FOR EITHER HOT OR COLD INLETS
- TOTAL FLOW SENSOR TUBES EXIT ON HOT DECK SIDE
- PRICE CONTROLS FACTORY MOUNTED
- PRICE THERMOSTAT FIELD MOUNTED
- SILENCER - MEDIUM PRESSURE STYLE, 22 GAUGE GALVANIZED CASING 26GA PERFORATED LINER OVER FIBERGLASS ACOUSTIC MEDIA
- PRODUCT TO BE SHIPPED ASSEMBLED WITH SILENCER FACTORY ATTACHED
- INTERNAL MIXING BAFFLE

OPTIONS:

- DISCONNECT SWITCH

TERMINAL LINERS AND CONSTRUCTION OPTIONS:

- 1" (25mm) FIBERGLASS
- FF
- FF50 SM
- FB1 PM
- CRAF AFPM

SILENCER LINERS:

- PL - POLYMER LINER
- FC - FIBERGLASS CLOTH

ALL METRIC DIMENSIONS () ARE SOFT CONVERTED. IMPERIAL DIMENSIONS ARE CONVERTED TO METRIC AND ROUNDED TO THE NEAREST MILLIMETER.

PROJECT:		PRICE®	
ENGINEER:		GH	DDUQ8000 DUAL DUCT ULTRA QUIET CONSTANT & VARIABLE PRICE CONTROLS PRESSURE INDEPENDENT
CUSTOMER:		254145	
SUBMITTAL DATE:	SPEC. SYMBOL:	2024/06/03	